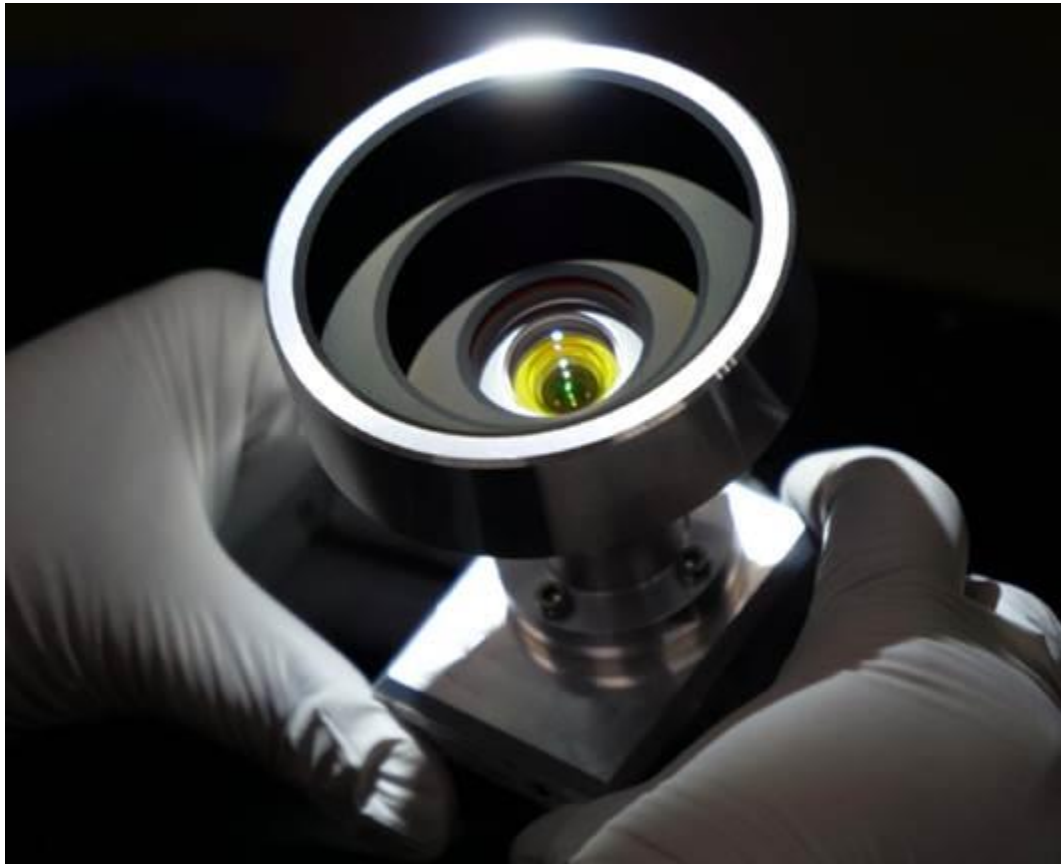


# AURICAM™



## MULTI-PURPOSE CAMERA

- SPECIFICALLY DESIGNED FOR MONITORING SPACECRAFT HEALTH & SAFETY, RENDEZVOUS MISSIONS, SSA AND LANDING
- COMPACT DESIGN & HIGH ROBUSTNESS
- BASED ON AURIGA STAR TRACKER HEADS FLIGHT PROVEN SINCE 2019
- GUARANTEED FOR 7/15 YEARS LIFETIME IN LEO/GEO ORBITS
- AVAILABLE IN 2 QUALITY STANDARDS: ECSS CLASS 1 AND NEW SPACE

# AURICAM™

## MULTI-PURPOSE CAMERA

### TECHNICAL SPECIFICATIONS

SENSOR PERFORMANCES	VALUES	
Resolution	2048 x 2048 pixels ; 5.5 µm pitch	
Shutter type	Global shutter	
Programmable Integration time	[60 µs – 30 s]	
Image type	Color or Black & White	
LENS OBJECTIVE AND BAFFLE CHARACTERISTICS (2 options)		
Diagonal Field of View	35°	80°
Focal	25 mm	10 mm
Aperture	F/3.5 to F/8	F/4 to F/8
Sun Exclusion Angle	38°	64°
ENVIRONMENTAL CHARACTERISTICS		
Operating range (baseplate temp.)	-25 to +45 °C	
Storage temperature	-40 to +80 °C	
Mechanical first resonance frequency	> 600 Hz	
Vibration (random)	35° : > 14 g <sub>RMS</sub>	80° : 12 g <sub>RMS</sub>
Volume with baffle	35° : 140 x 71 x 65 mm	80° : 135 x 71 x 65 mm
Mass	35° : < 420 g	80° : < 450 g
LIFETIME AND CLASSIFICATION		
Lifetime	7 years in LEO & 15 years in GEO	
EEE component class	ECSS Class 1 or Industrial grade	
Export Control	EU Dual Use 6A003.b.5	
ELECTRICAL / COMMUNICATION / SOFTWARE INTERFACES		
Interface	SpaceWire	
Power supply	4.5 to 9 V	
Power consumption (max EoL)	< 2W	
Memory	8 Gb Nand Flash & 2 x 512 Mb SDRAM embedded	
Frame Rate	Up to 6 FPS full frame (with binning) / possible upgrade to 10 FPS	

#### SMART DESIGN

- Affordable cost
- Compact and Modular Design
- Field of view can be adapted upon request
- Aperture can be adapted under request
- Baffle can be adapted upon request
- EGSE available

#### HIGH ROBUSTNESS

- High reliability and lifetime
- Compatible with LEO & GEO environment
- Several sets of calibration available
- Derived from Sodern Auriga Star Tracker in orbit since 2019

### CONTACT

#### SODERN

Email : sales-department@sodern.fr

Phone : + 33 1 45 95 70 00

#### SODERN

20 Avenue Descartes

94450 Limeil-Brevannes, France

www.sodern.com